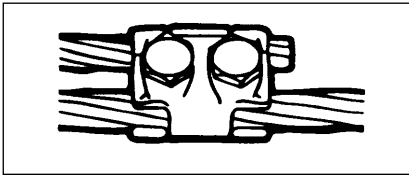


Blackburn®

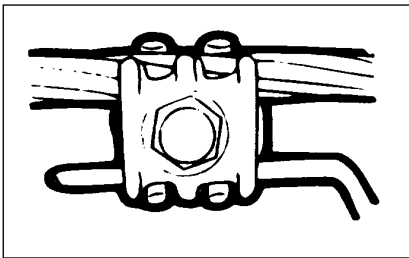
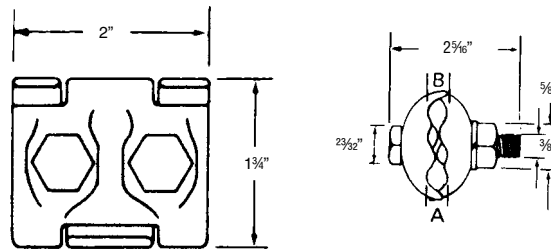
Parallel Groove Connectors



Type PC – Two-Bolt Parallel Groove Clamp

- A copper alloy parallel groove clamp; hex head bolts with square shank of silicon bronze, spring washers also of silicon bronze.
- Square shank bolts prevent turning while tightening.
- Contour of casting permits use of socket wrench if desired.
- Large contact area increases conductance.
- No special tools required.
- Not recommended for aluminum conductor

Cat. No.	Conductor Range AWG or kcmil				Conductor Diameter (in.)			
	Main		Tap		A		B	
	max.	min.	max.	min.	max.	min.	max.	min.
PC250	250 str.	4 sol.	250 str.	4 sol.	.575	.204	.575	.204



Type K – Jumper Clamps

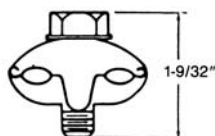
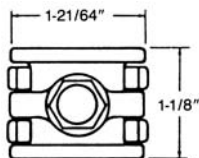
- Cast of high strength copper alloy.
- Furnished with silicon bronze hex washer head bolt.
- Parallel groove design; no need to remove bolt for installation.
- Only one size for all requirements from No. 8 solid copper to 1/0 ACSR or 2/0 copper.
- Available plated, unplated or with plating in one groove.

Cat. No.	Plated Groove		Copper Groove	
	Max.	Min.	Max.	Min.
K1	1/0 ACSR 2 SCG amerductor 1/16 galv. strand	6 ACSR 12SCG amerductor 8 solid iron	2/0 str. copper 7/16 Copperweld* 2A Copperweld*	8 solid copper 9-12D Copperweld* etc.

Plated with plating removed from one groove. For use with aluminum, amerductor, or galvanized steel strand to copper or copper bonded steel wires.

Cat. No.	Either Groove	
	Max.	Min.
K2	1/0 ACSR 2 SCG amerductor 1/16 galvanized steel strand	6 ACSR 12 SCG amerductor 8 solid iron

Clamp plated. For use with amerductor, aluminum, or galvanized steel stranding.



Cat. No.	Either Groove	
	Max.	Min.
K3	2/0 str. copper 7/16 copperweld* 2A copperweld*	8 solid copper 9 1/2D copperweld* etc.

Clamp, not plated. For copper to copper connections.

* Trademark of Copperweld.